

## Technical Data

<b>Design :</b>	Pneumatic double-piston quarter turn actuator
<b>Design features :</b>	Rack-and-pinion system, piston guide via guide rods
<b>Angle of rotation :</b>	0°-135°
<b>Air pressure supply :</b>	mind. 2 bar, max. 8 bar
<b>Operating medium :</b>	Dry and filtered compressed air
<b>Ambient temperature :</b>	-25°C to +80°C
<b>Mounting position :</b>	any
<b>Resistance to corrosion :</b>	Industrial atmosphere
<b>Lubrication :</b>	Life time lubrication with grease ISO 51825-K2K-30
<b>Seals :</b>	NBR-O-Rings, 70 Shore
<b>Coatings :</b>	Housing anodized and colour sealed End caps - CED cathodic electrodeposition
<b>Maintenance and inspection :</b>	AMG actuators are free of maintenance within the life time. Provided that: <ul style="list-style-type: none"> <li>• the actuator is properly mounted</li> <li>• the operating medium used is clean and non-aggressive</li> <li>• the actuator is operated under normal ambient conditions</li> <li>• the actuator is used in compliance with the intended use (see assembly and maintenance manual)</li> </ul>
<b>Applied standard:</b>	DIN EN ISO 5211, DIN EN 15714-3, VDI / VDE 3845, DIN 79
<b>Options:</b>	Adjustable inner / outer travel stops up to +/- 5° via travel-stop-module (TSM) Ambient temperature up to +100°C Ambient temperature down to -40°C Sealing elements made of FKM (viton) or alternatively fluorosilicone Tailor made mounting kits and dimensioning acc. To customer requirements Variable cycle times (fast / slow) Variable sens of rotation (clockwise / counterclockwise) Coating options: Hard-Coat, chemical nickelplating, plastic coating, special lacquer



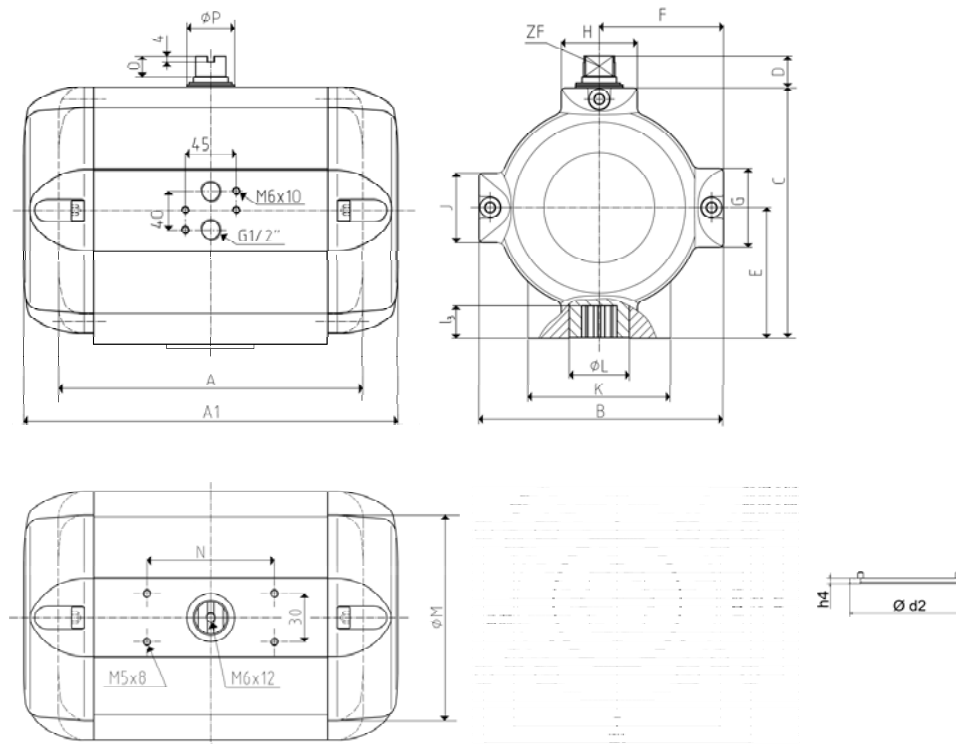
**SAD - 135°**

# DOUBLE-PISTON QUARTER TURN ACTUATORS

## TYPE BR16 SAD 135°

Size	45
Weight [kg]	90
Stroke volume [dm³]	42,1
Operating times [sec.] <sup>1)</sup>	
OPEN	6,0
CLOSE	6,0

1) operating times at 4,5 bar air pressure supply without load (standard values)



Type	air torque Ma [Nm] at operating pressure pe [bar]																	
	2 bar		2,5 bar		3 bar		3,5 bar		4 bar		4,5 bar		5 bar		5,5 bar		6 bar	
	MIN	MAX	MIN	MAX	MIN	MAX	MIN	MAX	MIN	MAX	MIN	MAX	MIN	MAX	MIN	MAX	MIN	MAX
SAD 45	893		1156		1419		1674		1934		2199		2457		2717		2980	

Design	SAD
Size	45
A (double-acting)	635
A1 (single-acting)	-
B	330
C	337
D	30
E	175
F	165
G	84
H	125
K	150
Ø L#	106
J	84
Ø M#	292
N	130
O	18
Ø P#	90
ZF	46
Connection ISO 5211	F16
Ø d2#	130
h4	3
Ø d3#	165
4x d4xh3#	4x M20x32
Ø d5#	-
l3#	50
s	46
4x d6xh5	-
8x d7xh6	8x M16x24
Y	170
Z	96
W1	220
X1	116
G1	-